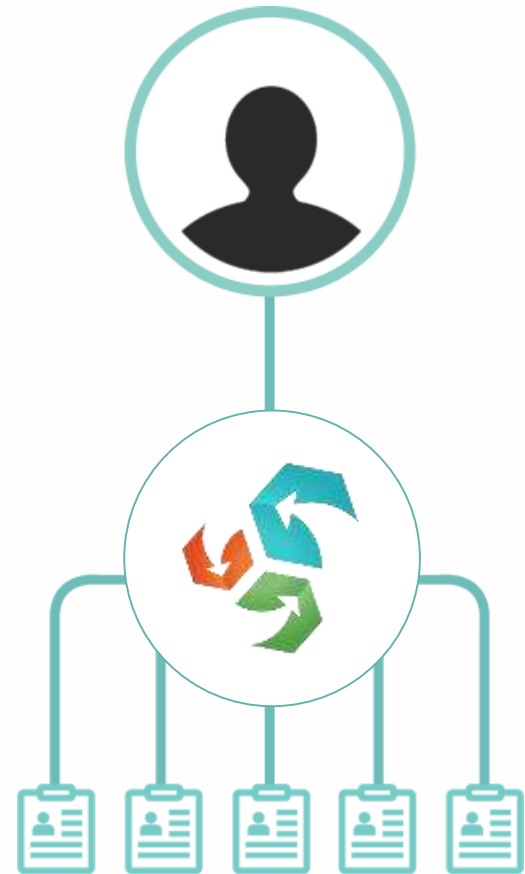


———— Presenter: Rick Penner ————

What is Re-TRAC Connect?



Web-based software that organizations use to **collect, manage & measure** recycling and other waste management information.



National Clients



Food recovery challenge



Electronics challenge



Federal Green challenge

State & Provincial Clients



Local Government Clients



Comprehensive Reporting



Comprehensive Reporting Capability

- Facility reporting
- Annual local government reporting
- Grant applications
- Business Reporting
- Stewardship programs

Comprehensive Reporting



Comprehensive Reporting Capability

- Award applications
- Competitions
- Education and awareness programs



Overview

Portland Metro



Regional Hauler Reporting

- 1.5 million people
- 6 local governments

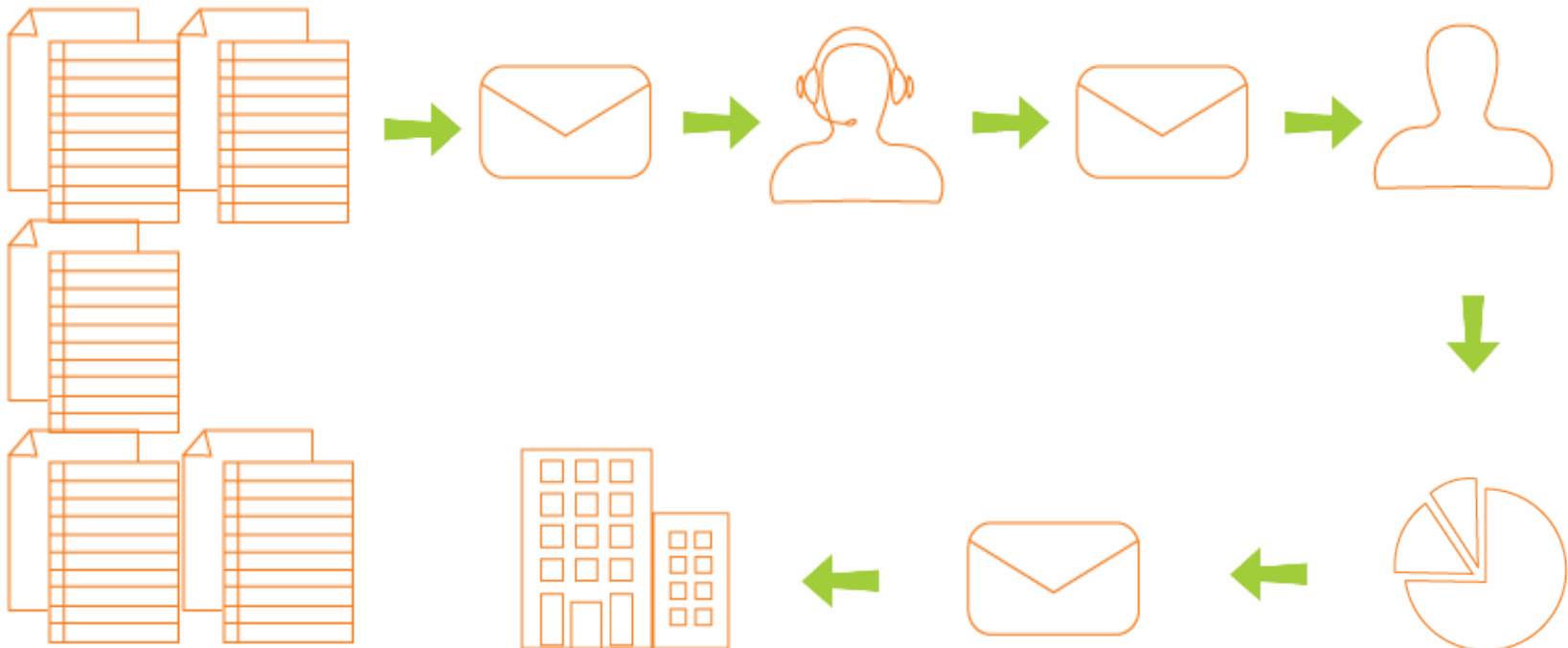


Challenges

Portland Metro



Complex, time consuming data collection



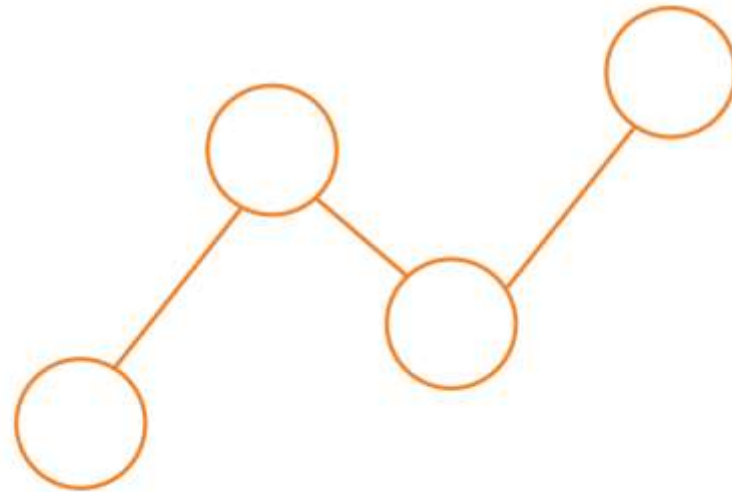
Objectives

Portland Metro



Time for a Change

- Better quality data
- Streamline process



Implementation

Portland Metro



Managing the Transition

- Consultation with haulers
- Metro managed with input from stakeholder group
- 8 months
- Training for all reporting entities

Material Tonnage

	MARKET *	MATERIAL *	TONS *	SOURCE *	
1	- Select - <input type="button" value="v"/>	Paper - Mixed or single grade <input type="button" value="v"/>	120.00 -----	Commercial (Business) <input type="button" value="v"/>	<input type="button" value="x"/> Remove
2	- Select - <input type="button" value="v"/>	Paper - Mixed or single grade <input type="button" value="v"/>	150.00 -----	Multifamily <input type="button" value="v"/>	<input type="button" value="x"/> Remove
3	- Select - <input type="button" value="v"/>	Commingled Materials <input type="button" value="v"/>	42.00 -----	Construction & Demolition <input type="button" value="v"/>	<input type="button" value="x"/> Remove
4	- Select - <input type="button" value="v"/>	Commingled Materials <input type="button" value="v"/>	421.55 -----	Multifamily <input type="button" value="v"/>	<input type="button" value="x"/> Remove
5	- Select - <input type="button" value="v"/>	Metal - Tinned steel cans <input type="button" value="v"/>	12.44 -----	Commercial (Business) <input type="button" value="v"/>	<input type="button" value="x"/> Remove
6	- Select - <input type="button" value="v"/>	Motor oil <input type="button" value="v"/>	22.00 -----	Commercial (Business) <input type="button" value="v"/>	<input type="button" value="x"/> Remove
7	- Select - <input type="button" value="v"/>	Paper - Mixed or single grade <input type="button" value="v"/>	37.00 -----	Multifamily <input type="button" value="v"/>	<input type="button" value="x"/> Remove

Total Tons

804.99

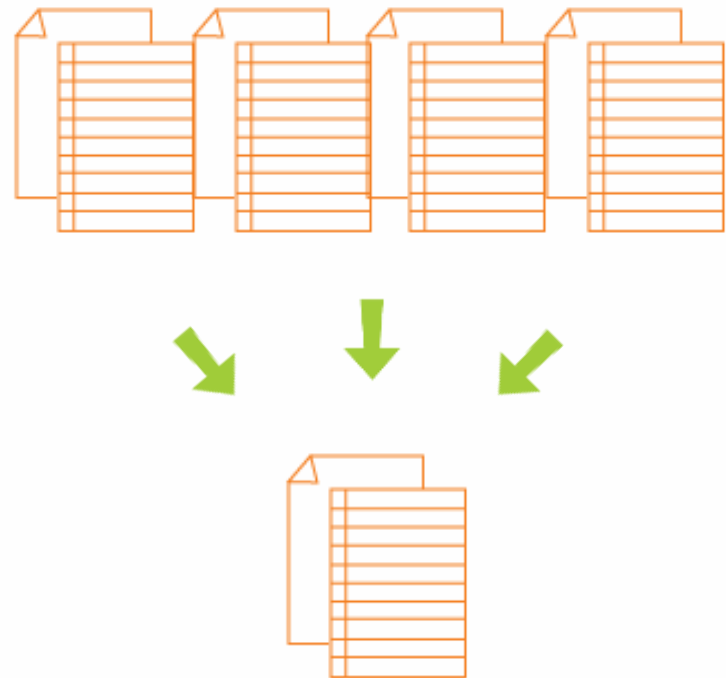
Comments

Cost Effective Solution

Portland Metro



- Fully integrated
- Instant analytics
- Standardized data set



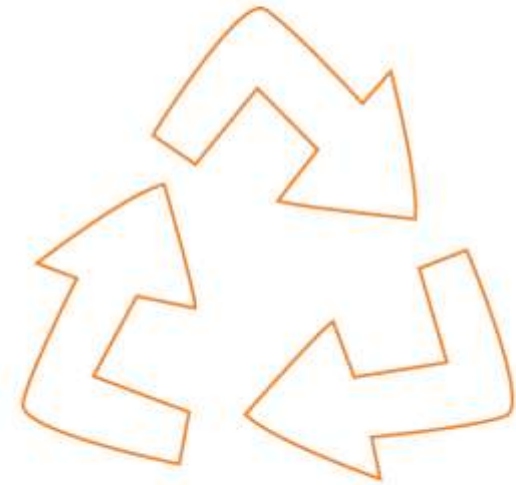
Overview

Austin, TX



Universal Recycling Ordinance

- Zero waste by 2040
- Multi-family & commercial buildings
- Annual diversion plans



Challenges

Austin, TX



- 10,000+ properties
- Communication management
- Data security





Solution

Austin, TX



URO Online Reporting System

- Easy on-site audits
- Integrated messaging system
- User permissions





West Central Texas Council of Governments

- State-designated planning agency for SW Management
- 19 Counties
- Develops source reduction, waste minimization, reuse, recycling, and composting programs

Challenges

WCTCOG



- Used spreadsheets to track annual diversion efforts for each of the 19 counties in the region
- Each year, they copied and pasted formulas from the old spreadsheet to the new one
- Faced spreadsheet calculation errors, circular references, & system crashes that resulted in data loss

Solution

WCTCOG



- Implemented Re-TRAC's Tracker Program
- Established baseline diversion rates for each county
- Results cross-referenced with education campaigns to measure the impact on diversion rates

MATERIAL	AMOUNT	UNITS	TONS	ACTIVITY/PROCESS
Batteries				
Batteries - Commingled		Tons		Unspecified
Glass				
Glass - Commingled	4,715.000	Tons	4,715.000	Recycled
Hazardous Waste				
Antifreeze		Tons		Unspecified
Freon		Tons		Unspecified
HHW (Household Hazardous Waste)		Tons		Unspecified
Motor Oil		Tons		Unspecified
Paint - Latex	68.000	Tons	68.000	Recycled
Paint - Oil Based		Tons		Unspecified
Used Oil		Tons		Unspecified
Used Oil Filters		Tons		Unspecified
Metals				
Aluminum	115.000	Tons	115.000	Recycled
Appliances		Tons		Unspecified

Implementation

WCTCOG



- Centralized data
- Eliminated errors and data loss
- Best practice reports
- Saves 1-2 days of program administration time per month



Testimonial

WCTCOG



“We love RE-TRAC Connect! We are extremely grateful for the software because it saves us time and money.”

- Wendy Allen, Regional Services Director







Benefits of Web-based Software

- Standardizes
- Systemizes
- Gain access to other tools & resources



What is Recyclesearch?

For Re-TRAC Users

An easy and convenient way for users to share information that they are managing in RE-TRAC with the public.



What is Recyclesearch?

For the Public

A convenient way to find information about local waste management programs, activities, and opportunities.





BEYOND THE BIN RECYCLING DIRECTORY

MassDEP

Results

Total: 511 Prev **1** 2 3 4 5 Next

1) Bay State Textiles - Drop Off Location 7 miles from you

360 Lynn Fells Parkway, Melrose, MA 02176, USA

Visit our website
617-877-2432

Expand Listing + Visit Profile Map It

2) Bay State Textiles - Drop Off Location 7 miles from you

16 Franklin Street, Melrose, MA 02176, USA

Visit our website
617-877-2432

Expand Listing + Visit Profile Map It

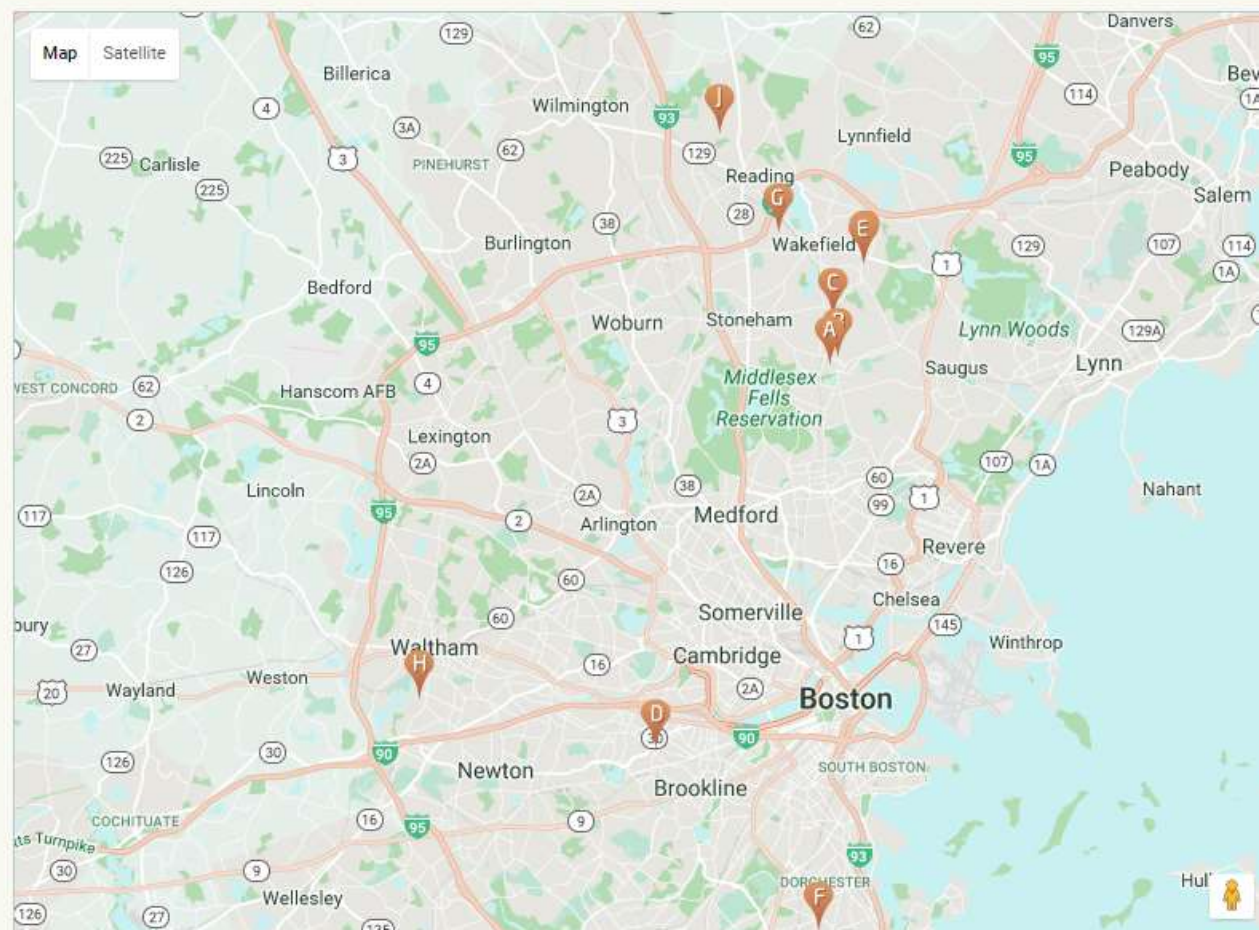
3) Bay State Textiles - Drop Off Location 8 miles from you

1030 Main Street, Wakefield, MA 01880, USA

Visit our website
617-877-2432

Expand Listing + Visit Profile Map It

4) Epilepsy Foundation Textile Collection - Drop Off Location 4 miles from you



Re-TRAC.com

Rick Penner | rick@emergeknowledge.com