

**SMALL TOWNS
AND
SUSTAINABILITY:
A FACILITATED
DISCUSSION**

**2017 Growing
Sustainable
Communities
Conference**

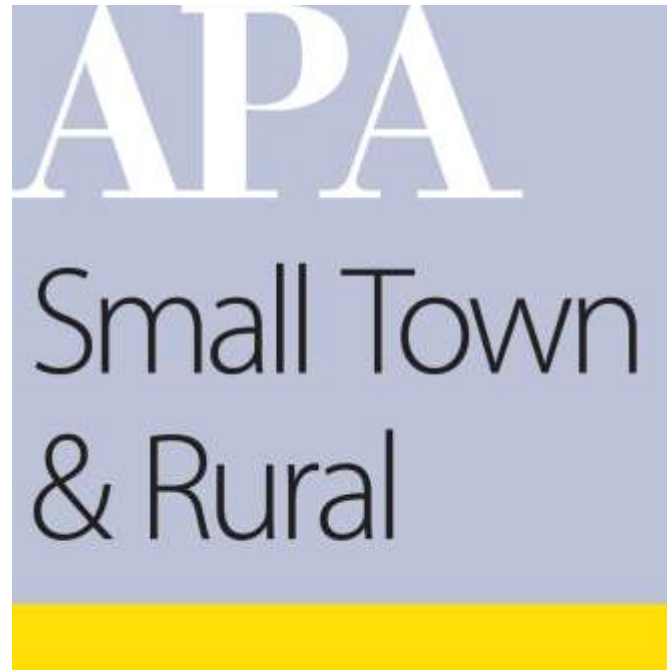
Chad Nability, AICP

*Hall County Regional
Planning Commission
STaR Immediate Past Chair*

Keith Marvin, AICP

*Marvin Planning
Consultants*

Facilitated Discussion Sponsored By:



What is Planning for Sustaining Places?

“A dynamic, democratic process through which communities plan to meet the needs of current and future generations without compromising the ecosystems upon which they depend by balancing social, economic, and environmental resources, incorporating resilience, and linking local actions to regional and global concerns. “

APA Sustaining Places Task Force, 2012

Why Focus on the Comprehensive Plan?

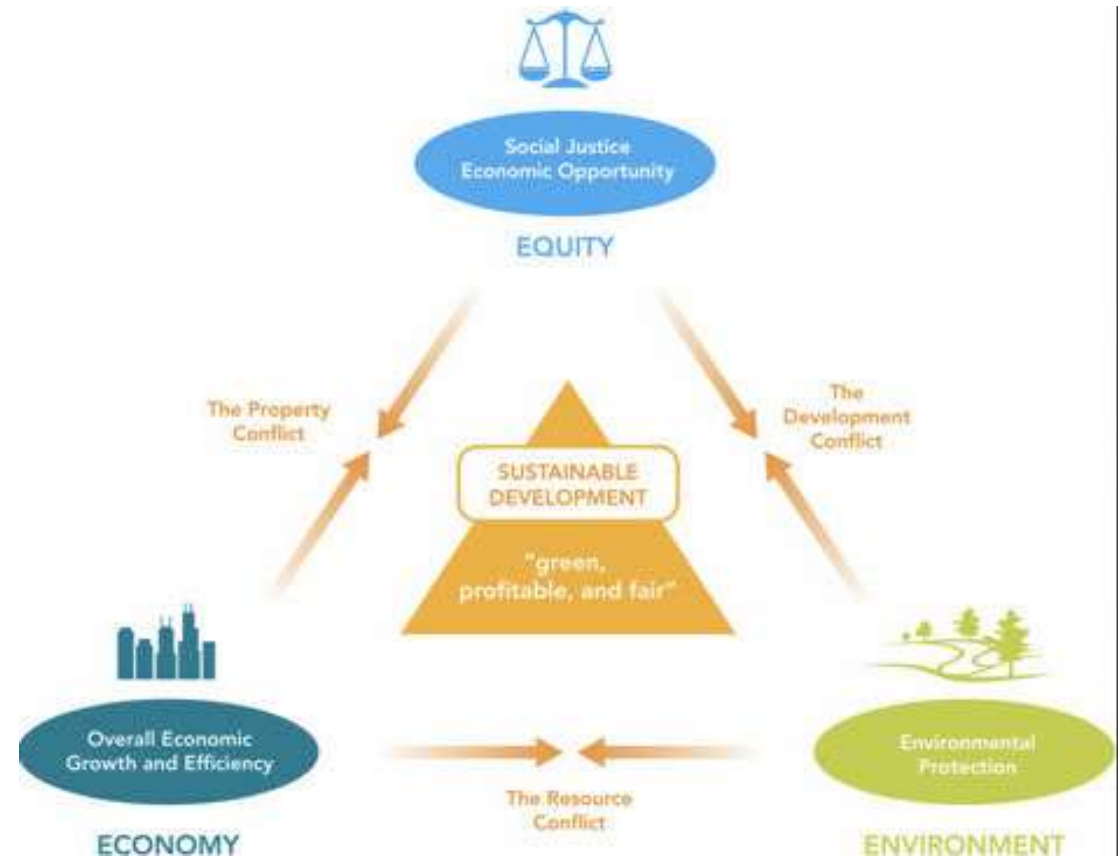
“As the leading policy document guiding the long-range development of local jurisdictions in the United States, the comprehensive plan plays a critical role in planning for sustainability. “

*Sustaining Places: Best Practices for Comprehensive Plans,
APA PAS Report, 2015*

Key Characteristics of Comprehensive Plans for Achieving Sustainable Outcomes

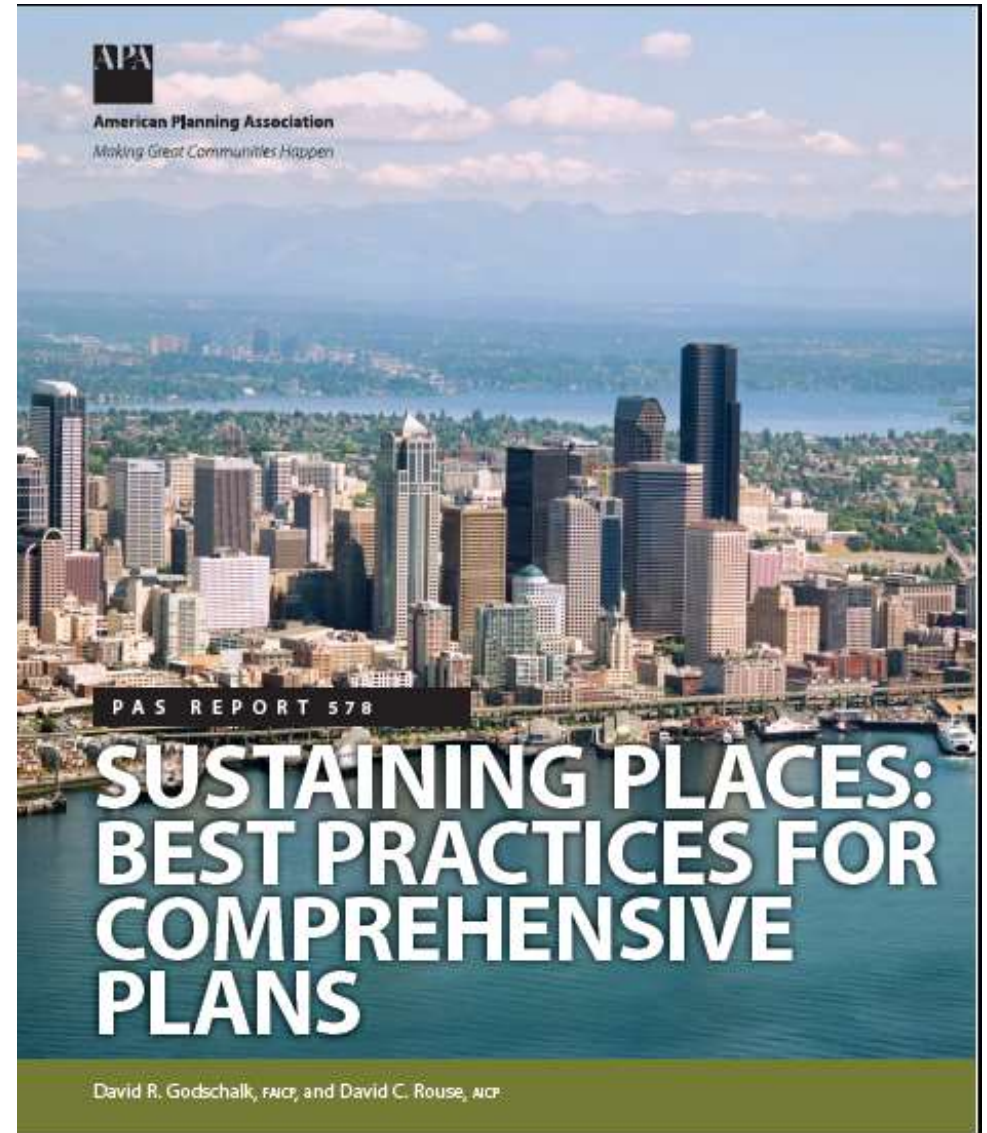
Key Characteristics:

- Visionary in meeting needs of future generations
- Reflect balance in values
- Incorporate systems thinking
- Action-oriented



Need for Standards and 21st Century Models

- Account for new challenges and innovations
- Foster a learning process
- Guide creation of new plan and updates of existing plan

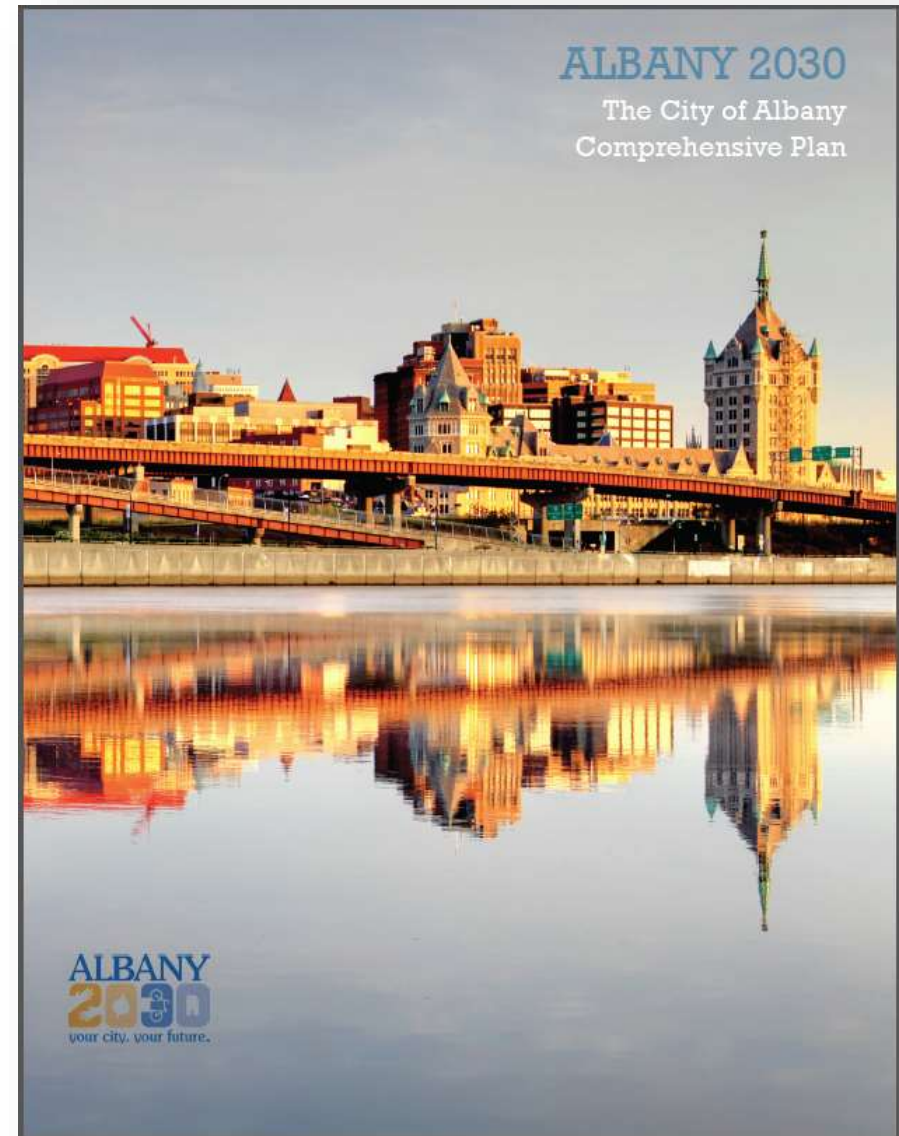


Pilot Communities

Pilot Community	Population
Savona, NY	822
Foxborough, MA	16,865
Wheeling, WV	28,213
Goshen, IN	31,719
Rock Island, IL	39,018
Auburn, WA	70,180
New Hanover County, NC	202,677
Oklahoma City, OK	599,199
Seattle, WA	634,535
Memphis/Shelby County, TN	927,644

Plan Principles

1. Livable Built Environment
2. Harmony with Nature
3. Resilient Economy
4. Interwoven Equity
5. Healthy Community
6. Responsible Regionalism



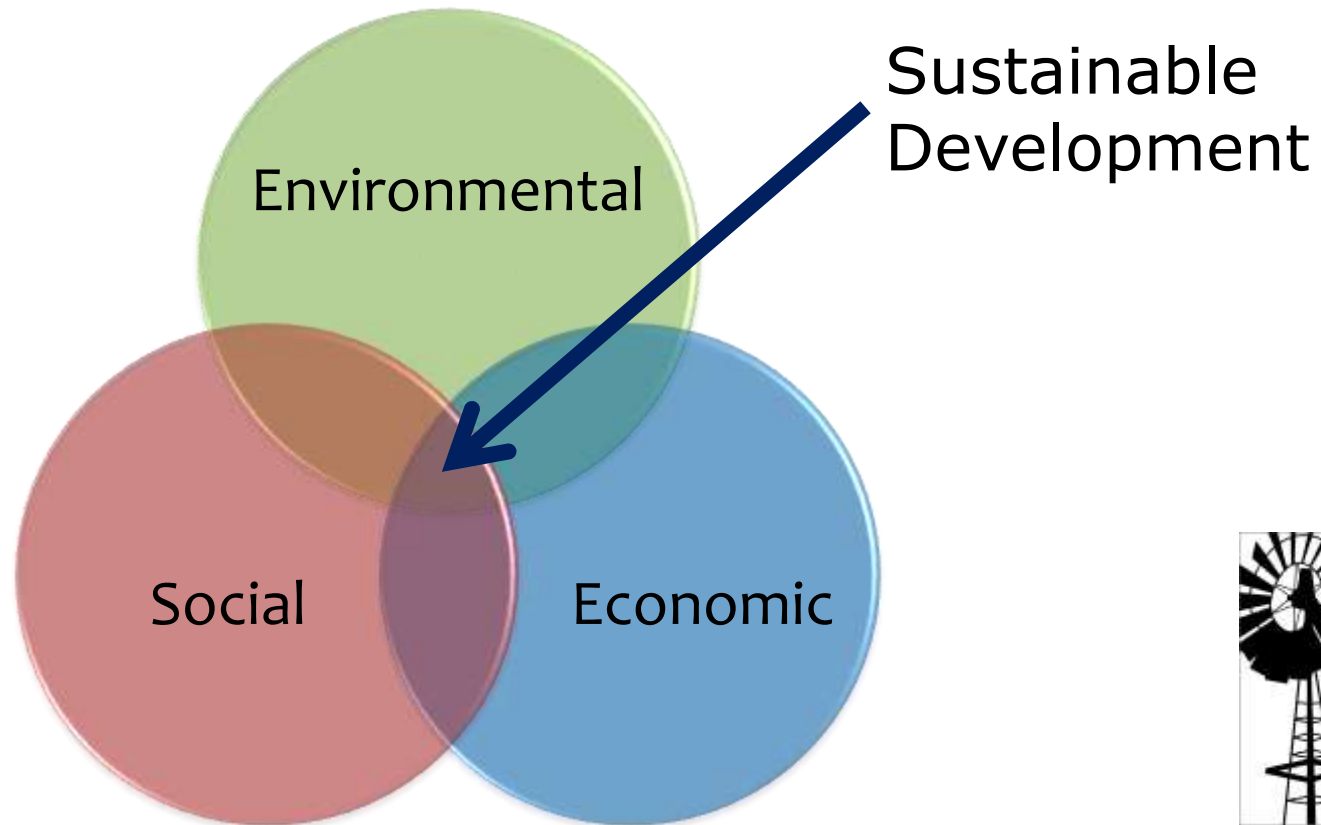
What does “Sustainability” really mean?

- What does “Sustainability” mean in Small towns and rural areas?
- Is Sustainability different in small towns and rural areas than in larger urban areas?
 - If so.... Why and how?
 - If not....Why not?

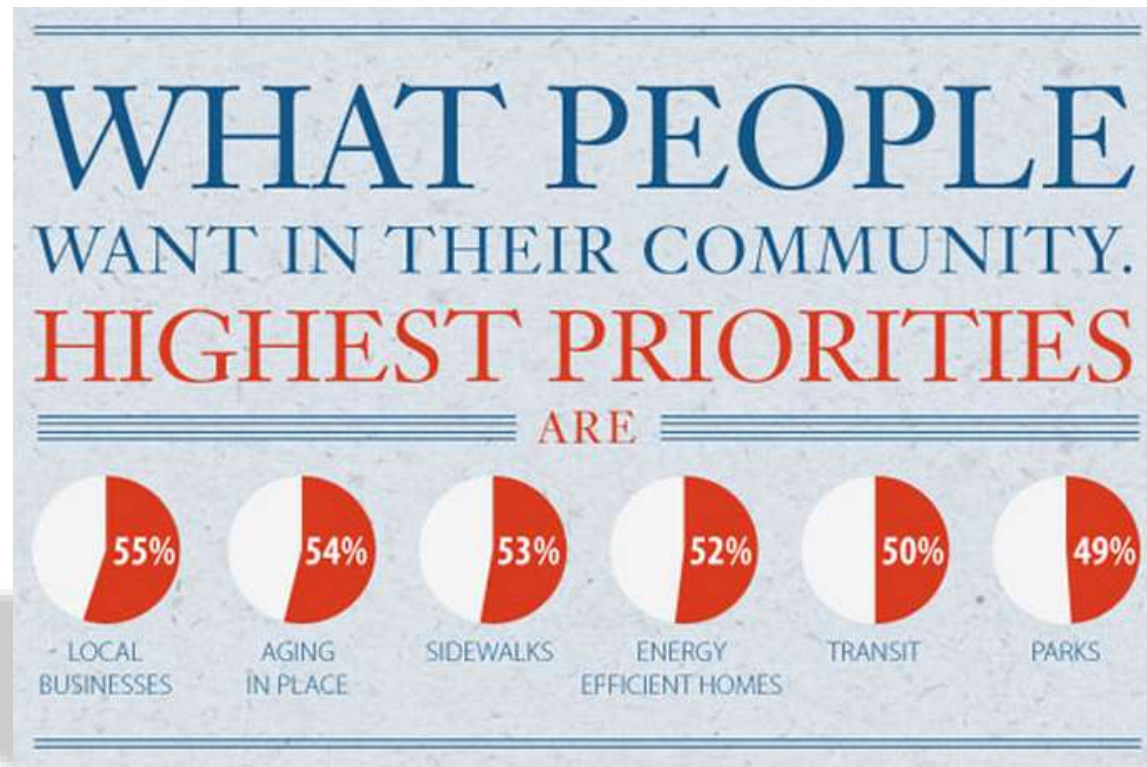


Sustainability in General

- Focuses on three main elements



Why the interest?



Source: American Planning Association's 2012 National Survey: Planning in America: Perceptions and Priorities

Comprehensive Plan Standards for Sustaining Places

- Pilot Program – Plan Designation
 - Austin, Texas
 - Norfolk, Virginia
 - Raleigh, North Carolina
 - Rock Island, Illinois

Initial Recognition Participants

- **Silver Level**

- [Envision Longmont](#)

City of Longmont, Colorado

- [Imagine 2040: Tampa Comprehensive Plan](#)

Hillsborough County City-County Planning Commission and the City of Tampa, Florida

- [Bring It On Bloomington!](#)

McLean County (Illinois) Regional Planning Commission

- [Plan DSM](#)

City of Des Moines, Iowa

- [Plano Tomorrow](#)

City of Plano, Texas

Initial Recognition Participants

- **Bronze Level**

- [Los Angeles County General Plan](#)

Los Angeles County, California

- [City of Issaquah Comprehensive Plan](#)

City of Issaquah, Washington

- [Monroe Comprehensive Plan](#)

City of Monroe, Wisconsin

Iowa Smart Planning

- Adopted in 2010
- Was mandatory in order to receive certain funding
- Has since been made a voluntary program by the previous Branstad administration



Question 1:

- How have your communities incorporated sustainability practices into their comprehensive plans?

(10 Minutes)

Question 2:

- What struggles did you have or do you anticipate with including sustainability practices into comprehensive plans for your communities?

(10 Minutes)



Question 3:

- How do sustainability issues in small towns and rural areas differ from the issues faced by more urban communities?

(10 Minutes)



What Next?

- Reporting out in STaR Newsletter
Any Volunteers?
- Non-Division Members Please
Join STaR

