

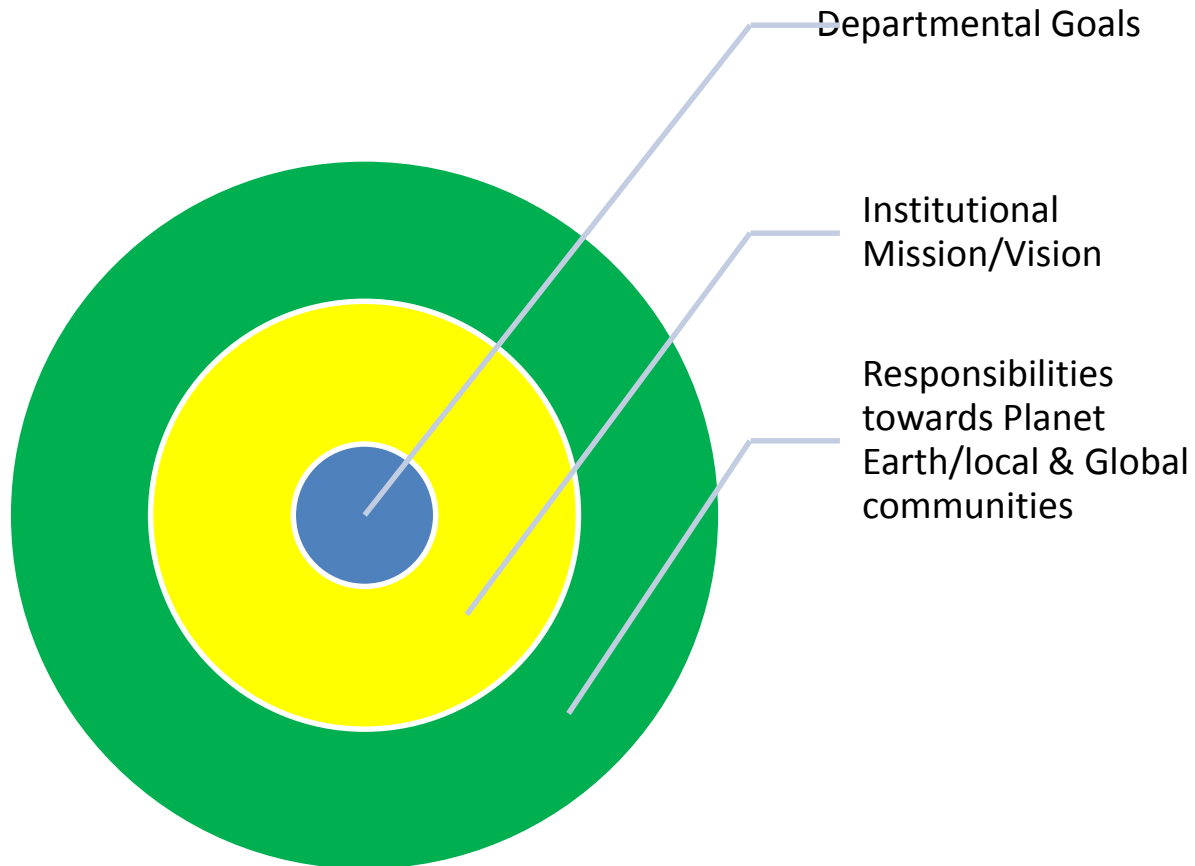


Dr. Ganesh Naik
Associate Professor
Chemistry
College of Saint Mary
Omaha NE

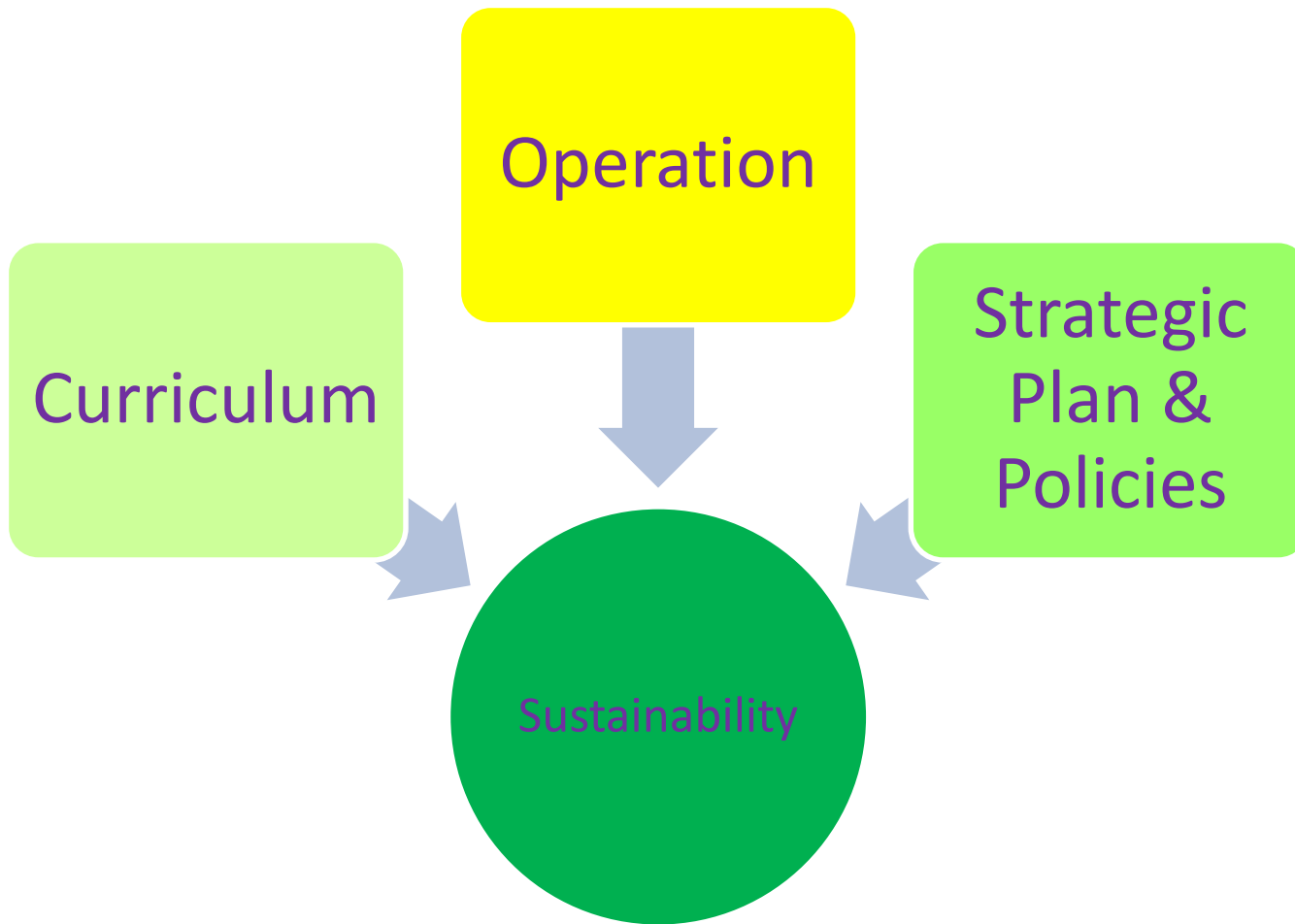
Embracing Sustainability: Role of Higher Education institution

Empowering Youth to Support Sustainable Cities

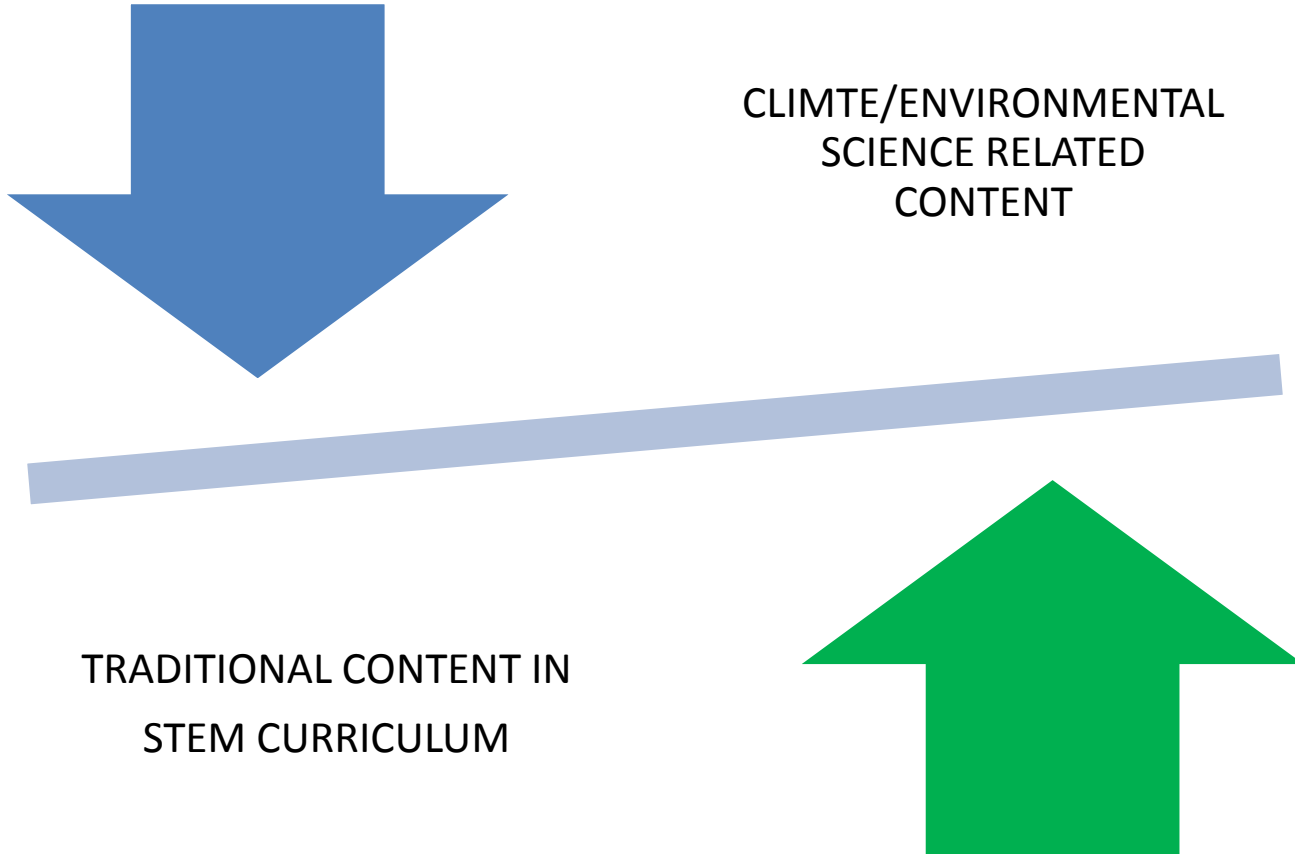
Goals & Objectives.....



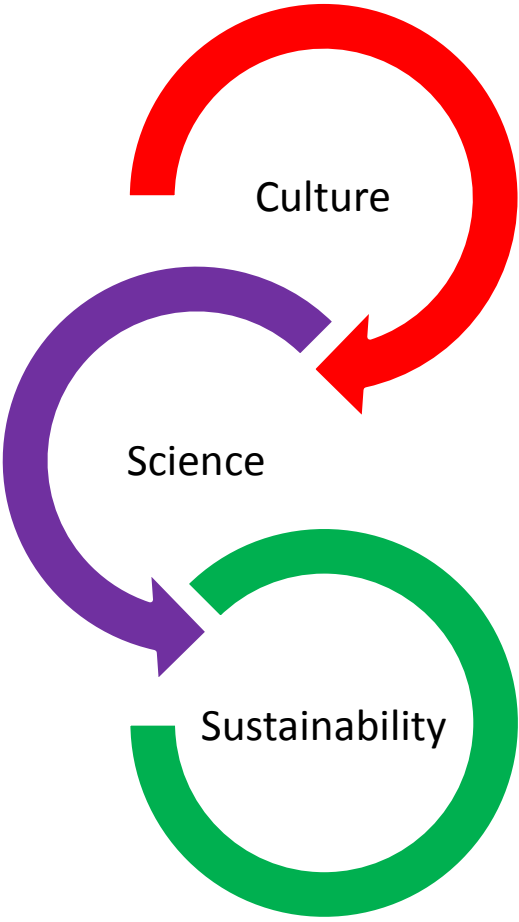
Key areas.....



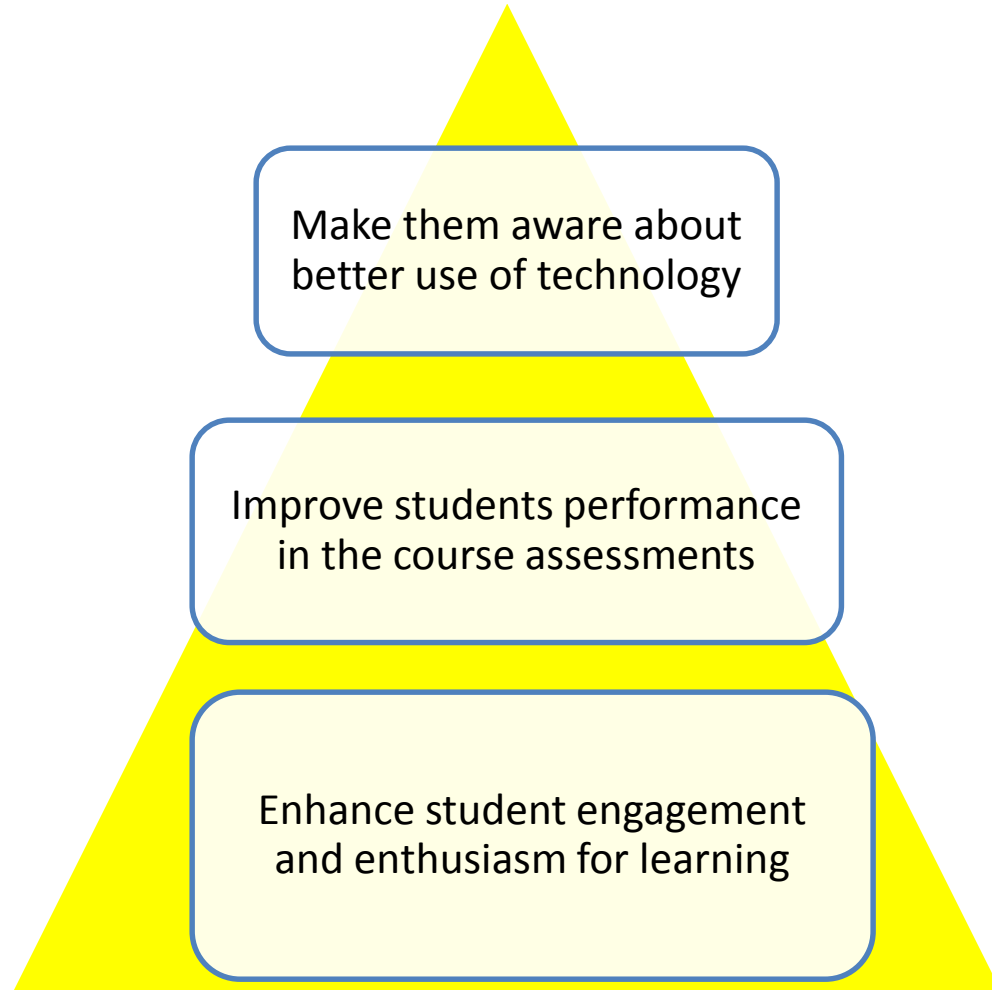
COURSE CURRICULUM



Traditions vs. Science of Sustainability



Benefits of integrating technology in course curriculum



Circular Design.....



Screenshot image of Theodore Gray's periodic table application.

SEARCH

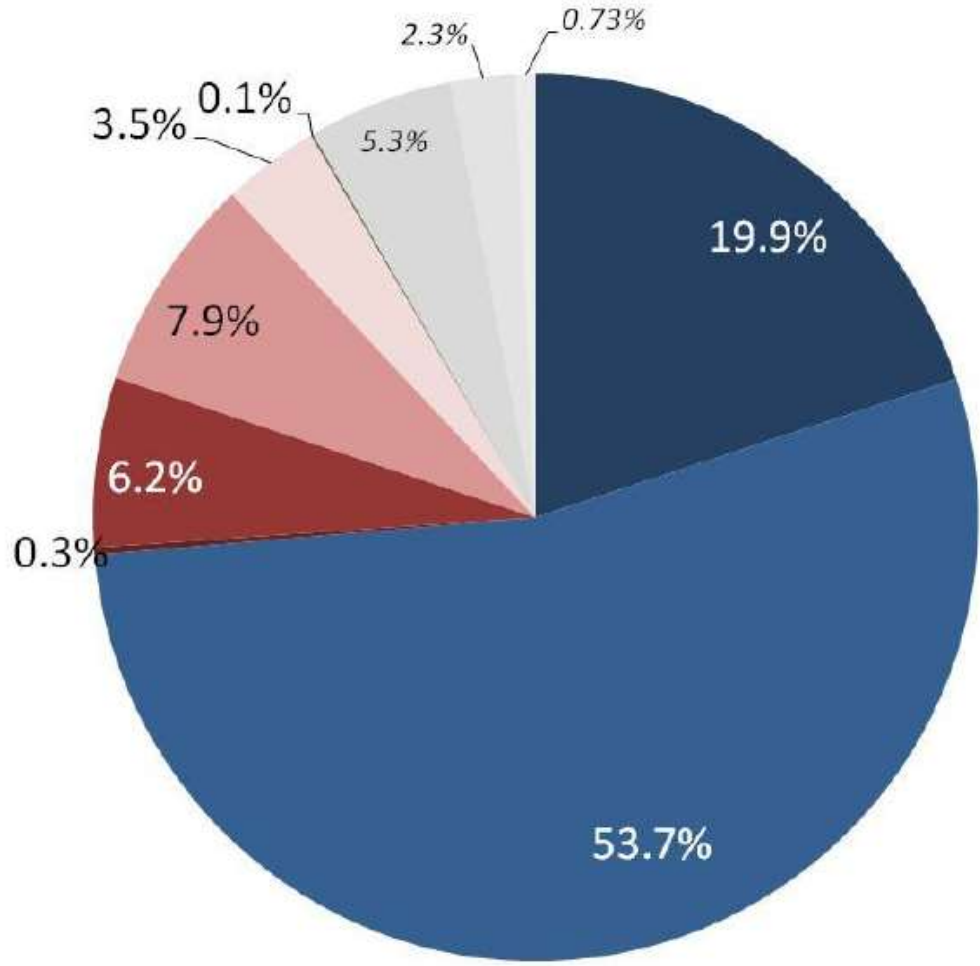
THE Elements

THEODORE GRAY

I GIVE YOU HERE, THE UNIVERSAL CATALOG OF EVERYTHING YOU CAN DROP ON YOUR FOOT. THESE ARE THE ELEMENTS, THE BUILDING BLOCKS OF YOUR WORLD AND THE BASIC STUFF OF ALL THAT IS HERE OR THERE OR ANYWHERE. ENJOY! TOUCH ANY ELEMENT TO SEE MORE, THEN GO TO ITS SECOND PAGE FOR ROTATABLE SAMPLES AND A STORY OR TWO.

PHOTOGRAPHS BY THEODORE GRAY AND NICK MANN

[Song](#) [About](#) [Contents](#) [Back](#)



Energy = 73.7%

- Natural Gas
- Purchased Electricity

Transportation = 17.9%

- University Fleet
- Faculty / Staff Commuting
- Student Commuting
- Directly Financed Air Travel

Other = 8.5%

- Scope 1 (Refrigerants/Chemicals & Agriculture)
- Scope 2 Transmission and Distribution Losses
- Purchased Goods (Paper, Electronics, Office Supplies)
- Waste (Solid Waste & Wastewater)

Total Emissions = 5,342 MTCO₂e

Arigato

Mahalo

Grazie

Spasiba

THANK
YOU

Thinks
Moite

Gracias

Merci

Danke

Shukran